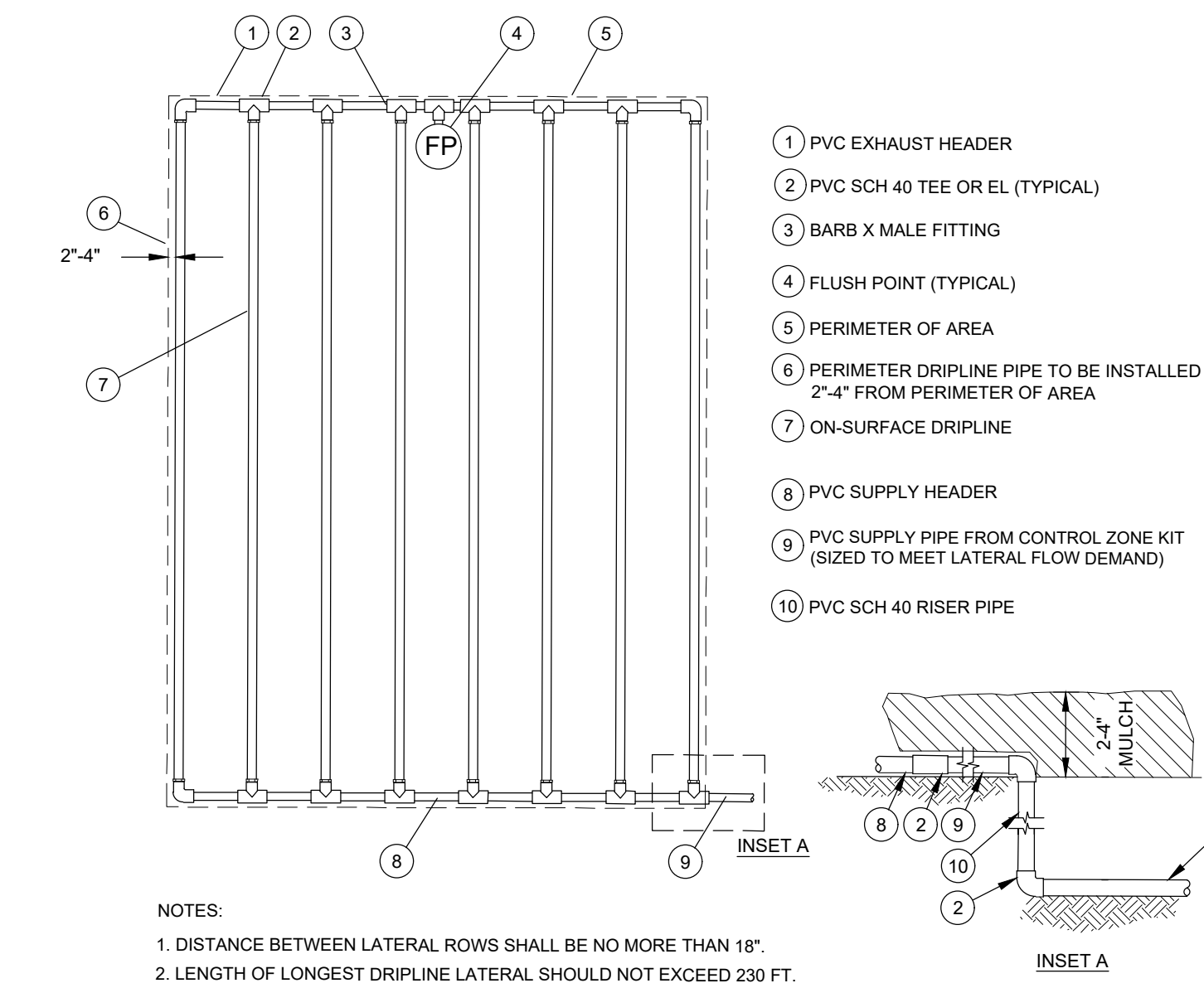
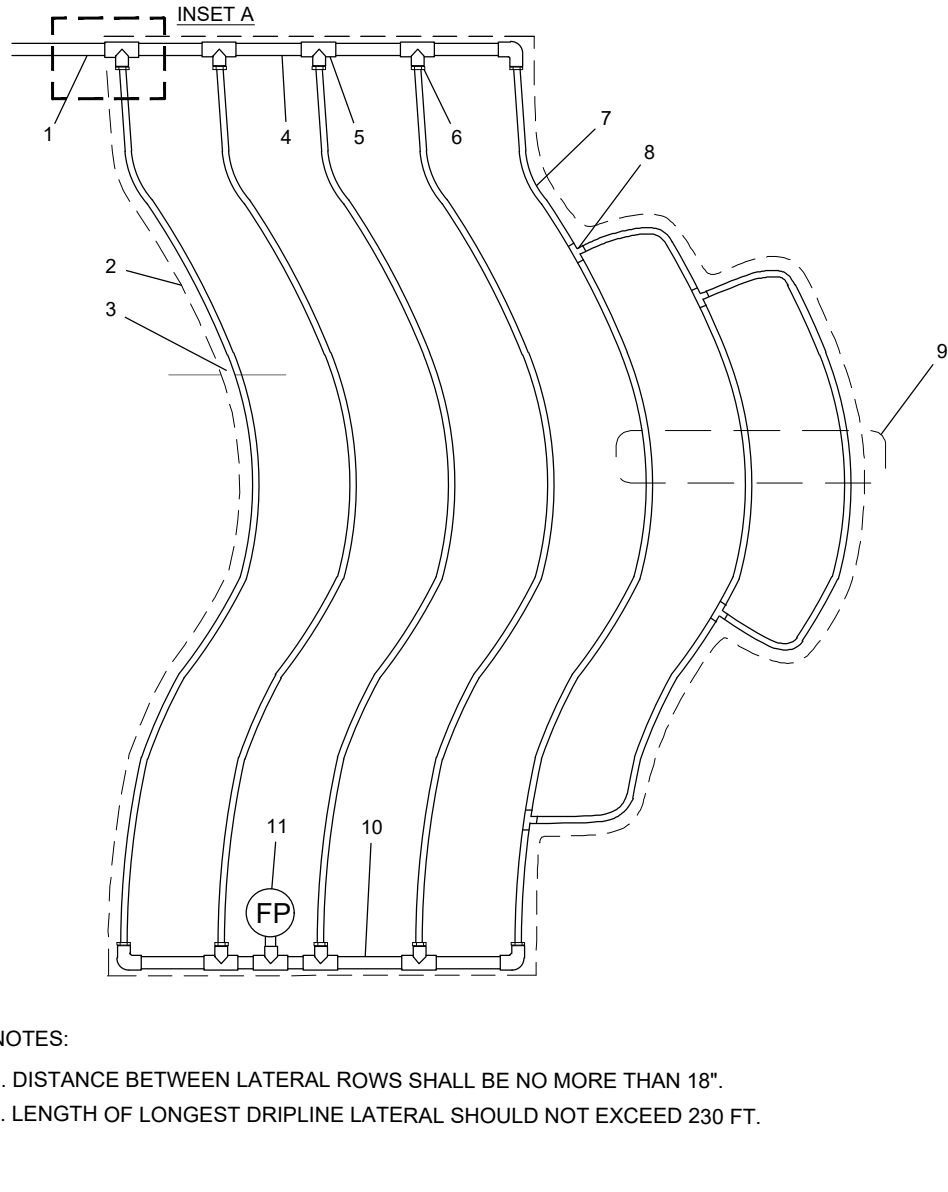


RAIN SENSOR DETAIL



NOTES:
1. DISTANCE BETWEEN LATERAL ROWS SHALL BE NO MORE THAN 18".
2. LENGTH OF LONGEST DRIPLINE LATERAL SHOULD NOT EXCEED 230 FT.

ON-SURFACE DRIPLINE/END FEED LAYOUT



NOTES:
1. DISTANCE BETWEEN LATERAL ROWS SHALL BE NO MORE THAN 18".
2. LENGTH OF LONGEST DRIPLINE LATERAL SHOULD NOT EXCEED 230 FT.

ON-SURFACE DRIPLINE / TYPICAL ODD CURVES LAYOUT

LEGEND:

- 1 IRRIGATION CONTROLLER (PRO-C) PER PLAN
- 2 IRRIGATION CONTROL WIRE IN CONDUIT
SIZE AND TYPE PER LOCAL CODES
- 3 ELECTRICAL SUPPLY CONDUIT
CONNECT TO POWER SOURCE, J-BOX INSIDE CONTROLLER
- 4 ADJACENT SURFACE TO MOUNT CONTROLLER PER PLAN

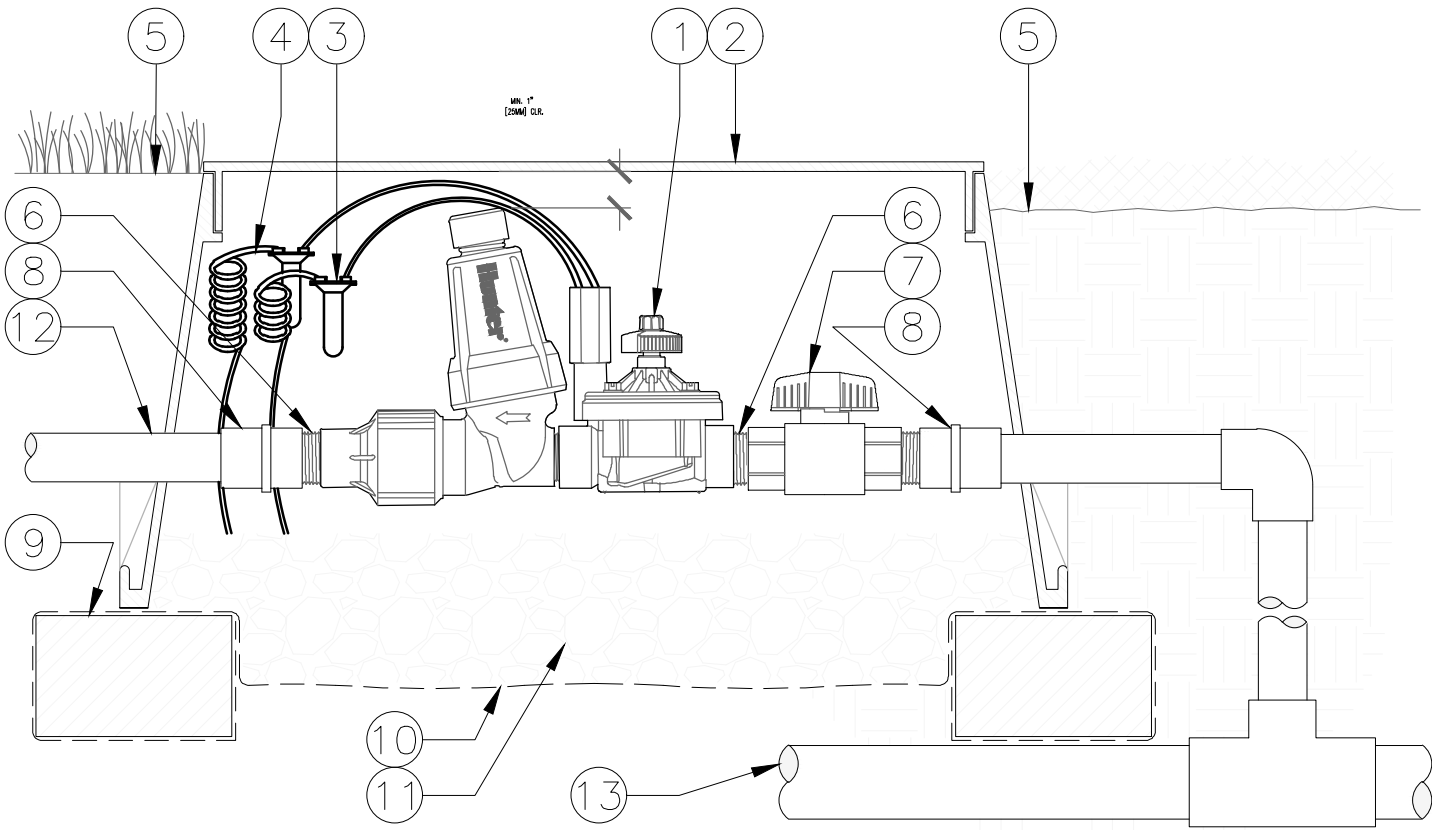
NOTE
MOUNT CONTROLLER LCD SCREEN AT EYE LEVEL,
CONTROLLER SHALL BE HARD-WIRED TO GROUND
110 VAC POWER SOURCE

LEGEND:

- 1 RAIN-CLICK SENSOR
- 2 WALL MOUNT CONTROLLER
- 3 POST OR SUITABLE MOUNTING SURFACE
- 4 FINISHED GRADE

LEGEND

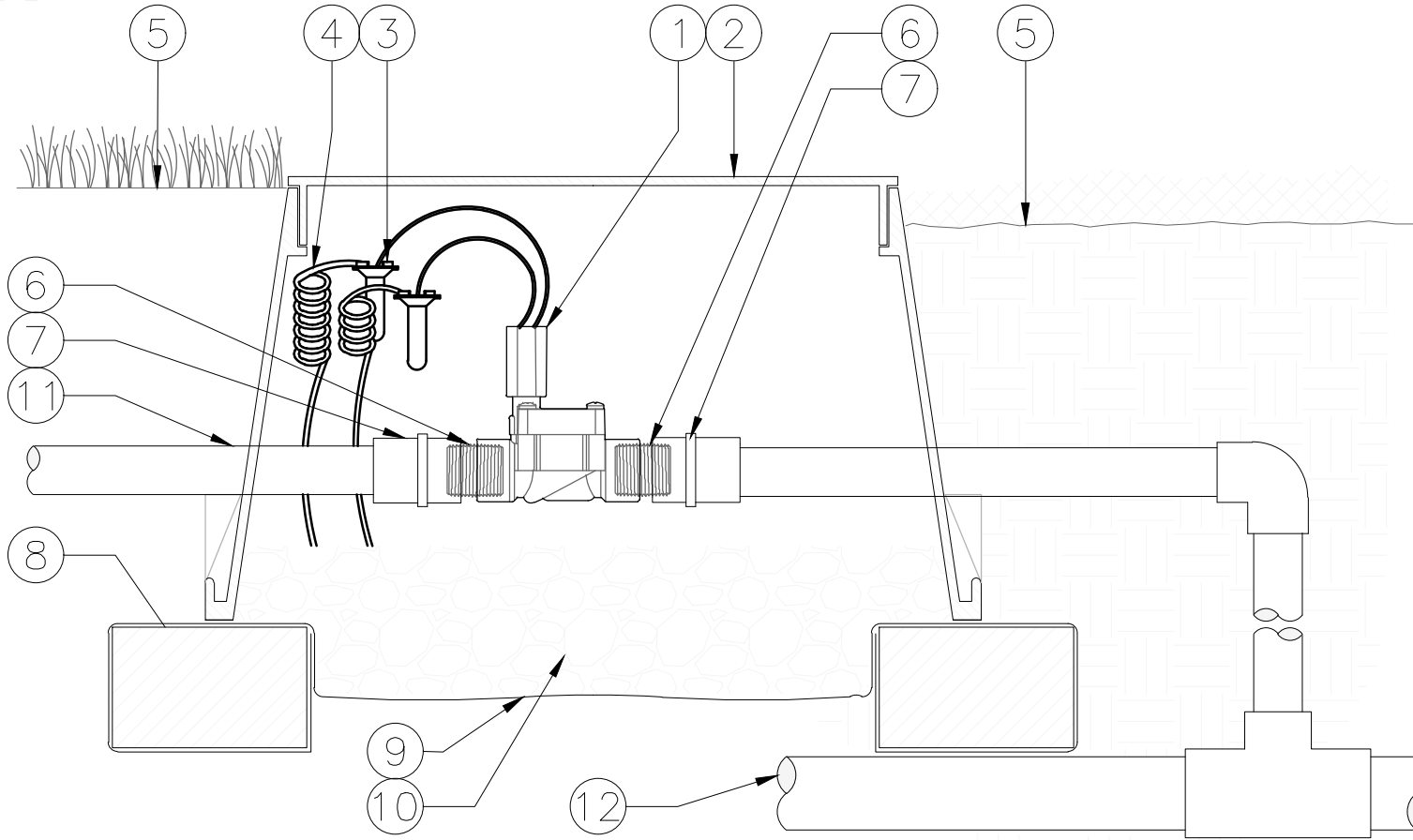
- 1 HUNTER REMOTE CONTROL VALVE (IC2) WITH
FILTER REGULATOR
- 2 IRRIGATION VALVE BOX: HEAT STAMP LID WITH
'RCV' IN 2" LETTERS
- 3 WATERPROOF CONNECTORS (2)
- 4 18"-24" COILED WIRE TO CONTROLLER
- 5 FINISH GRADE AT ADJACENT SURFACE (TURF
OR MULCH)
- 6 SCH. 80 CLOSE NIPPLE, MATCH SIZE TO
MAINLINE LATERAL AND FITTINGS
- 7 VALVE
- 8 ISOLATION VALVE, SIZE AND TYPE PER PLAN
- 9 PVC SLIP X MPT ADAPTOR
- 10 BRICK SUPPORTS (4)
- 11 FILTER FABRIC - WRAP TWICE AROUND BRICK
SUPPORTS
- 12 3/4" WASHED GRAVEL - 4" MIN. DEPTH
- 13 IRRIGATION LATERAL



DRIP VALVE DETAIL

LEGEND

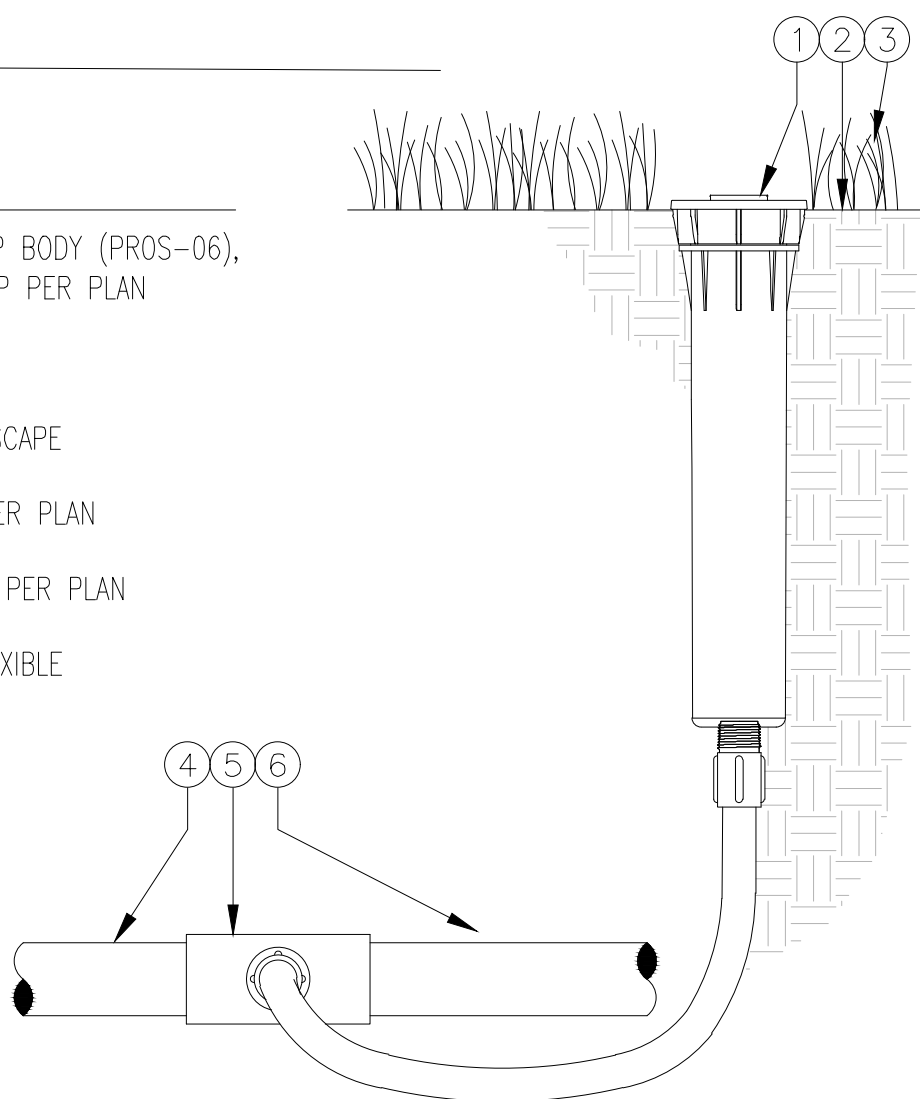
- 1 HUNTER REMOTE CONTROL VALVE (PGV)
- 2 IRRIGATION VALVE BOX: HEAT STAMP LID WITH
'RCV' IN 2" LETTERS
- 3 WATERPROOF CONNECTORS (2)
- 4 18"-24" COILED WIRE TO CONTROLLER
- 5 FINISH GRADE AT ADJACENT SURFACE (TURF
OR MULCH)
- 6 SCH. 80 CLOSE NIPPLE, MATCH SIZE TO
VALVE
- 7 PVC SLIP X FPT ADAPTOR
- 8 BRICK SUPPORTS (4)
- 9 FILTER FABRIC - WRAP TWICE AROUND BRICK
SUPPORTS
- 10 3/4" WASHED GRAVEL - 4" MIN. DEPTH
- 11 IRRIGATION LATERAL
- 12 MAINLINE AND FITTINGS



VALVE DETAIL

LEGEND

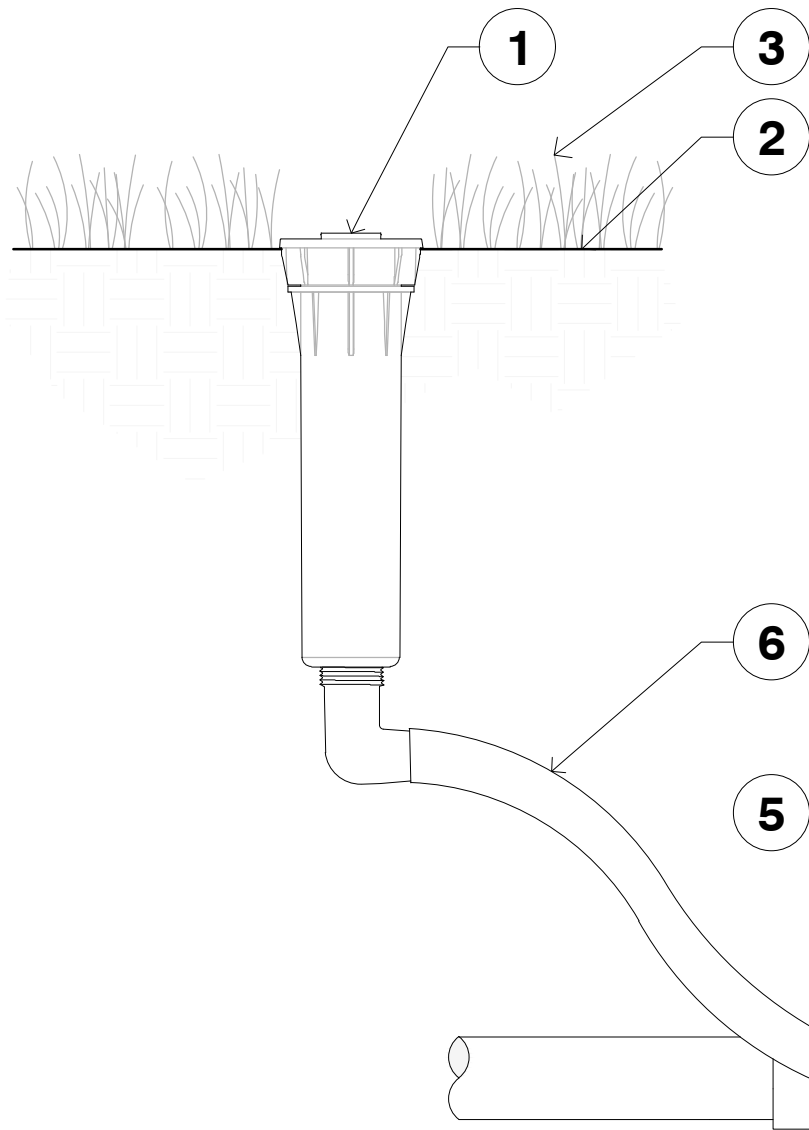
- 1 HUNTER POP-UP BODY (PROS-06),
NOZZLE AND CAP PER PLAN
- 2 FINISHED GRADE
- 3 ADJACENT LANDSCAPE
- 4 LATERAL PIPE PER PLAN
- 5 LATERAL FITTING PER PLAN
- 6 FIELD-BUILT FLEXIBLE
SWING ARM



PROS-6 DETAIL

LEGEND

- 1 HUNTER POP-UP BODY
PROS-04: WITH BUBBLER
NOZZLE PER PLAN
- 2 FINISHED GRADE
- 3 ADJACENT LANDSCAPE
- 4 LATERAL PIPE PER PLAN
- 5 LATERAL FITTING PER PLAN
- 6 FIELD BUILT SWING ARM WITH
(FLEXSG) TUBING AND SPIRAL
BARB ELBOWS (HSBE)



PROS-4/BUBBLER DETAIL

Project Team

Landscape Architect:

LA

LANDSCAPE
ARCHITECTURAL
SERVICES, LLC

Brandon White | Owner
772-834-1357 | brandon@las-fl.com
Paul Goulas | Owner
772-631-8400 | paul@las-fl.com
1708 SE Joy Haven Street
Port St. Lucie, FL 34983

Architect:

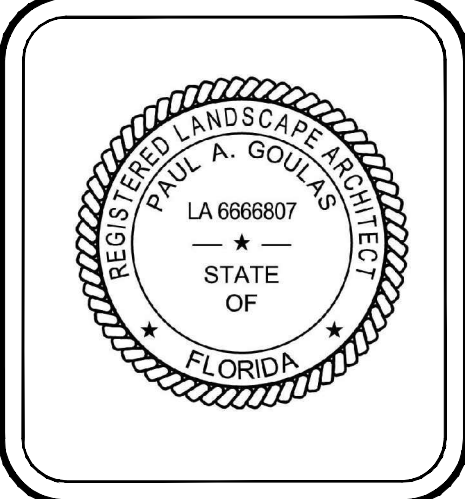
DTI

Design
Tech
International

Architectural • Planning • Interior Design
14115 N.W. 10th Ave., Suite 303
Miami Lakes, FL 33257
P: 781-585-4447
dtdesign@dtiintl.com
www.dtiintl.com

FOLIO 4942-03-27-0012
PROPOSED SHELL BLDG
2100 W ATLANTIC BLVD
POMPANO BEACH, FLORIDA 33069
Irrigation Details

| Revisions | | |
|-----------|-------|----------------------------|
| Date | Init. | Description |
| 07.26.22 | PG | Initial Submittal |
| 12.06.22 | PG | Revised per Landscape Plan |
| 2.27.23 | PG | Revised per Landscape Plan |
| 3.29.23 | PG | Revised per Landscape Plan |
| 5.13.25 | PG | Revised per Landscape Plan |



Drawn By: PG

Checked By: PG

Municipal Project:

Scale:

PZB

PZ25-12000021
05/27/2026

IRR-2